



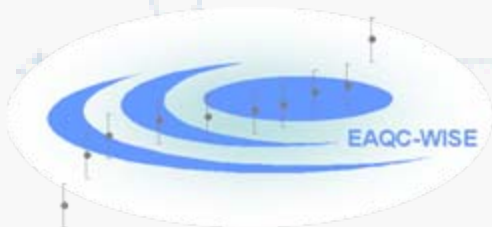
Scientific Support to Policies



EAQC-WISE
**European Analytical Quality Control in support of
the Water Framework Directive via the Water
Information System for Europe**

Report Discussion Group C
Final workshop
17-18 June 2008

Jaroslav Slobodník, Environmental Institute, Kos, Slovak Republic
Heather Leslie, Institute for Environmental Studies, VU University Amsterdam



Accreditation

- > Recommendation for the National Expert Group: National expert group should include a member from the NAB so they can receive the feedback (from labs) and comment on it – avoids misunderstandings.**
- > Recommendation for NAB (p. 31): NAB should report to the National Expert Group on the systemic deficiencies they encounter when accrediting laboratories.**
- > Stress that sampling is also covered by accreditation.**



EA WG on legislation issues

- > Suggestion to move 3rd bullet p.32 (different scopes for accreditation) (Philip?)**
- > It should be added that in applying the other minimal requirements, the EA WG make use of existing documents that have been/are being developed to determine acceptable frequency etc. (e.g. P9)**



PT schemes

- > Format should be adjusted to show more clearly what the recommendations are.**
- > Bottom-up approach is preferred process**
- > Top-down approach = Plan B. To be used when self-committed network of PT providers ceases to function (e.g. when market forces do not support the development of necessary schemes)**
- > Suggestion to the EU to tender the organisation of PTs for certain difficult parameters needed for the WFD**
- > “Quality” and “accreditation” should be addressed in the PT recommendations chapter**



MISSION OF NETWORK

- > **Support of the implementation of the WFD**
 - By providing harmonised PT schemes meeting the requirements of the EU QA/QC directive
- > **PT schemes organized by the Network members are fit for the purpose of assessing the laboratory performance required for the monitoring the requirements of the WFD**
- > **PT schemes will operate in accordance with the requirements of ISO/IEC Guide 43 and ILAC G13**
- > **The results will be evaluated on the basis of the internationally recognised scoring systems (ISO 13528)**
- > **Besides the harmonized laboratory performance evaluation, the Network allows the development of synergies among PTs providers and implementation of common strategies**

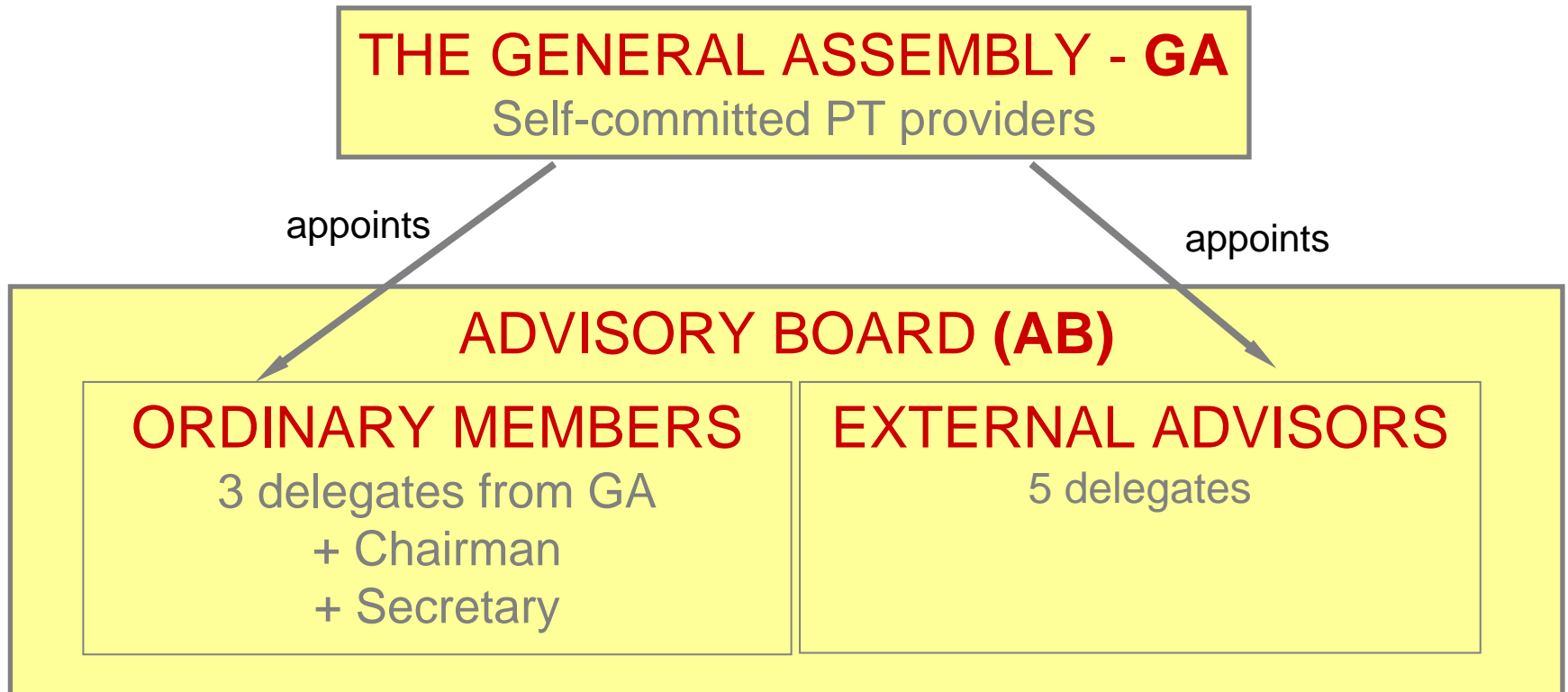


VALUE OF THE NETWORK

- > **Organisation of PTs for all parameters on the PS list**
 - Individual (independent) programmes of a single PT provider under the umbrella of the network
 - Joint PT programmes of network members
- > **Organisation of PTs at European level for analytes that are analysed only by few laboratories in each country**
- > **Organisation of PTs for “exotic” parameters**
- > **Guarantee of a harmonized performance evaluation of European laboratories involved in WFD monitoring, thus enhancing the comparability of monitoring data obtained throughout Europe**
- > **Decrease the cost of test samples due to co-operations among PT providers in the network**



The PT Network structure



Training

- > Main challenge: Everything is available but not available everywhere in all languages.**
- > More specified recommendations needed (revisions to chapter)**
- > Should incorporate attention to process (who is responsible for what)**
- > Similar to PT, how establishing a voluntary group of training providers is foreseen**
- > Refer to an expert group on training (subgroup of EU level Expert Group which is included in the scheme on p. 30). Harmonize diagram and text.**
- > Clearly highlight Plan B on p. 29 which is currently under ‘interaction with other processes’ (EU expert group could form a subgroup on training)**



Validated methods

- > Recommendation No. 9 – should be moved to summary or general introduction because it applies to all aspects**
- > More precise recommendation format**
- > Headings Research & Standardisation should be changed to ‘Research’.**
- > Separate headings for Method Development and Method Standardisation are suggested**

